



SUPPLYING THE GLOBAL SECURITY COMMUNITY SINCE 1956

Product Guide

PROVIDING THE SECURITY WORLD WITH QUALITY

• LOCK TUMBLER PINS • PINNING KITS • SECURITY TOOLS

“The #1 Choice of Security Professionals”

www.labpins.com



Made in The USA



Table of Contents

LAB International Security Associations We Proudly Support	1
LAB Pin Packaging.....	2
LAB Universal Pin Information.....	3
LAB Pin Refill Packs.....	4
LAB Cylinder Springs/Caps/Shims	5
LAB Original Pins	6
LAB Universal Pinning Kits.....	7-9
LAB Original Lock Manufacturer’s Pinning Kits	10
LAB Interchangeable Core Pinning Kits (Metal)	10
LAB Original Lock Manufacturer’s Pinning Kits (Wood)	11
LAB Original Lock Manufacturer’s Pinning Kits (Mini DUR-X).....	12
LAB Custom Pinning Products	13
LAB Tools & Accessories.....	14
LAB Brand Products for Best Interchangeable Cores.....	15-16
LAB Interchangeable Core Pin Reference Guide.....	17



LAB World Headquarters in Bristol, CT

LAB is the largest manufacturer of Swiss quality lock tumbler pins and pin kits. Servicing major lock manufacturers, the finest wholesale distributors and security professionals worldwide.

LAB provides precision lock tumbler pins, pin kits and LAB tools to over 30 of the largest lock manufactures worldwide.



**Premium Quality
Lock Pins, Rekeying Kits and Locksmith Tools
Phone: 1-800-243-8242, Fax: 860-583-7838**

Since 1956 LAB has specialized in the manufacturing of lock pins. LAB is the largest manufacturer of lock pins and lock rekeying kits. LAB has the reputation of being the highest quality lock tumbler pin manufacturer. LAB lock tumbler pins, rekeying kits and locksmith tools are the only choice of the finest lock manufacturers, security professionals, all the leading lock wholesale distributors, and contract hardware suppliers worldwide.



is proud to be a member of
the following Associations.



Visit LAB's website www.labpins.com to get the latest information on the LAB product line in addition to:

- LAB Order Form
- Product Listing of LAB Kits
- Artwork for all LAB Products
- Locate a Distributor Near You
- Company Overview
- Downloadable Product Guide

Plus much more information required to answer all your product questions

Ace, Arrow, BEST, Baldwin, CCL, Corbin Russwin, Dexter, Dorma, Falcon, Kwikset, Master, Medeco, Keymark, Medeco Biaxial, National, Sargent, Schlage, Weiser, Westlock, Yale and other trade names and trademarks used in this Product Guide are owned by the respective manufacturers of such products.

FOR MORE DETAILS SEE WEBSITE www.labpins.com

Pin Packaging



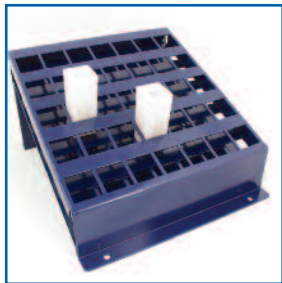
SMART PAC®

- The standard in pin packaging
- Separates pins into two tamper-proof, safety-sealed compartments.
- 150 pins
- Increment identification.
- Clear packaging allows view of contents.
- Easy storage
- **Packaging Code (S1)**

“Reusable” Flip Top Vial®

The snaptop lid allows you to re-seal the container and store for easy inventory.

- **Packaging Code (V1)**



Vial Stadium

LSS001

- Holds 35 LAB Vials
- Tie down feet for easy mounting on walls, benches or in vans
- Vials not included



PolyBag

The sealed Polybag is used for LAB Brand original lock manufacturer's cylinder pins and refill packs.

- **Packaging Code (P1)**



Quality Universal Pins

Use Only Genuine LAB Tumbler Pins for Guaranteed Accuracy

.003[®] System

*"The New Standard" Created and designed for LAB
by Robert A. Labbe, LAB President, CEO*



The LAB Royal Crown Pin™ Design is a Registered Trademark of LAB Security Systems

- .115 Dia.
- The most accurate universal pin made
- Use with the confidence of Original Manufacturer's Pins
- LAB PRO-STAFF Choice Award
- **COLOR-CODED** (LAB Copyrighted System)
- RADIUS EDGES that blend into flat center so master pins will not tip or roll
- Nose designed to decrease key insertion force
- **Packaging Code 150(S1)(V1) or 200(V2) pins per pack**
- **150 or 200 pins per pack**

Tops: .024 - .141
Bottoms: .126 - .360

.005 System

- .115 Dia.
- FLAT CENTER with precision chamfer, nose, finish and length
- **COLOR-CODED** to Lock Industry Standards
- Precision machined to exceed industry standards
- **Packaging Code 150(S1)(V1) or 200(V2) pins per pack**
- **150 or 200 pins per pack**

Tops: .010 - .320
Bottoms: .115 - .360



**NOTE: For COLOR-CODED Brass Universal
Interchangeable Core Pins - See Page 18**

Quality Refill Packs



.003[©] Pin Kit Refill Pack

KRP003

- Contains 124 packs of LAB Universal Tumbler Pins
- Tops: .010 -.200
- Bottoms: .156 -.360
- 50 pins per size
- .115 Dia.

NOTE: Springs not included

.005 Pin Kit Refill Pack

KRP005

- Contains 102 packs of LAB Universal Tumbler Pins
- Tops: .010-.300
- Bottoms: .150-.360
- 50 pins per size
- .115 Dia.

NOTE: Springs not included



ICORE Refill Pack

KRPIC

- Contains 28 Packs (A2)
- **COLOR-CODED** Universal Brass
- 18 Brass Master Pins sizes 2-19
- 10 Bottom Pins sizes 0-9
- Brass Caps - Stamped (100 per pack)
- 100 pins per size
- .108 Dia.



SCHLAGE Refill Pack

KRPSCH

- 22 packs of pins
- 1 Brass T-Pin Driver F506-451
- 8 Brass Master Pins - sizes: 2-9
- 3 Brass Top Pins - sizes: 1-3
- 10 **Nickel Silver** Bottom Pins - sizes: 0-9
- .115 Dia.
- 100 pins per size
- Original Manufacturer's Specifications

KWIKSET Refill Pack

KRPKWK

- 16 packs of pins
- **COLOR-CODED** Brass
- 6 Brass Master Pins sizes 1-6
- 2 Brass Standard Top Pins (.160/.180)
- 2 Brass Spool Pins (.160/.180)
- 6 Brass Bottom Pins sizes 1-6
- .115 Dia.
- 100 pins per size
- Original Manufacturer's Specifications

Note: Springs are not included in Refill Packs



Quality Springs/Caps/Shims

ALL SPRINGS PHOSPHOR BRONZE • 100 PER PACK EXCEPT WHERE NOTED

UNIVERSAL .115LT

- Long Tangle Resistant

Part Number
115LTV1
115LTP1



STANDARD UNIVERSAL .115L

- Long

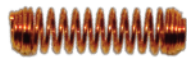
Part Number
115LV1
115LP1



STANDARD UNIVERSAL .115S

- Short

Part Number
115SV1
115SP1

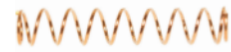


SPRINGS FOR INTERCHANGEABLE CORES .108

ICORE .108

- Best Style
- IC Long

Part Number
108BV1
108BP1
108BP5 (500 Springs)



- Falcon, Arrow, Schlage small format, Medeco Keymark
- IC Short

Part Number
108FV1
108FP1



BEST ORIGINAL STAINLESS STEEL IC SPRINGS

Part Number
108SV1
108SP1
108SP5 (500 per pack)



ORIGINAL MANUFACTURER'S FACTORY SPRINGS

SCHLAGE(T) PIN SPRING

Part Number **SPGSCHV1** (MFG# F506-453)

SCHLAGE/WEISER CYL. CAP SPRING

Part Number **SP741V** (MFG# C503-115)

KWIKSET STAINLESS STEEL

Part Number **KWKSPGV1** (MFG# 1777)
KWKSPGP1

CORBIN RUSSWIN STAINLESS STEEL STANDARD

Part Number **111SDV1** (MFG# 603F207)

INTERCHANGEABLE CORE

Part Number **IC-111ICV1** (MFG# 172F217)

ACE SPRING

Part Number **SPGACEV1** (MFG# AC8)

MASTER PADLOCK, YALE, CCL / NATIONAL .095 Diameter Springs

Part Number **SP95V1**



ORIGINAL DESIGN ICORE CAPS

Stamped and Machined Brass

- Stamped Brass

100 per pack - Part Number **I027V1**
I027S1
 500 per pack - Part Number **I027P5**

- Machined Brass

100 per pack - Part Number **I027MV1**
I027MS1
 500 per pack - Part Number **I027MP5**



ORIGINAL DESIGN BRASS PIN COVERS

6 Pin

25 per pack
 Part Number **FSC6V25**
 100 per pack
 Part Number **FSC6V100**

7 Pin

25 per pack
 Part Number **FSC7V25**
 100 per pack
 Part Number **FSC7V100**



CURVED SHIMS

- Length - 1.5" +/- 1/16"
- .0015 Stainless Steel
- Exceeds Industry Std.

25 Pack

Part Number **LSM0V25**

100 Pack

Part Number **LSM0V100**

PACKAGE IDENTIFICATION

S1 = SmartPac
V1 = Vial
P1 = Polybag

FOR MORE DETAILS SEE WEBSITE www.labpins.com



SUPPLYING THE GLOBAL SECURITY COMMUNITY SINCE 1956

Original Manufacturer's Pins

ALL LAB Brand Original Pins are Packaged 100 PER PACK EXCEPT WHERE NOTED

SEE PAGES 17 & 18 for More Product Information

LAB Brand Interchangeable Core Pins

LAB BEST ICORE Pins for A-2, A-3, A-4 Systems — (P1)
for use with all BEST Interchangeable Cores



.108 Dia.

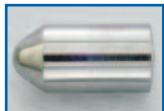
- A-2 Master / Top Brass Pin sizes 2B - 19B Bottom **Nickel Silver** Pin sizes 0A - 9A
- A-3 Master / Top Brass Pin sizes 1D - 13D Bottom **Nickel Silver** Pin sizes 0C - 6C
- A-4 Master / Top Brass Pin sizes 1F - 11F Bottom **Nickel Silver** sizes 0E - 5E

LAB ORIGINAL ICORE Pins for A-2, A-3, A-4 Systems — (V1) (P1)
for use with all ICORES using **Nickel Silver Keys (Except BEST)**
ie; Falcon, Arrow, Schlage small format, Medeco Keymark



.108 Dia.

- A-2 Master / Top Brass Pin sizes 2B - 19B Bottom **Nickel Silver** Pin sizes 0A - 9A
 - A-3 Master / Top Brass Pin sizes 1D - 13D Bottom **Nickel Silver** Pin sizes 0C - 6C
 - A-4 Master / Top Brass Pin sizes 1F - 11F Bottom **Nickel Silver** Pin sizes 0E - 5E
- All iCore pins above packaged in polybag quantities of 100, 1,000, 5,000.**



.115 Dia.

LAB Brand Pins For:
SCHLAGE CYLINDERS (V1) (S1) (P1)

- 8 Brass Master Pins - sizes: 2-9
- 3 Brass Driver Pins - sizes: .165, .200, .235
- 10 **Nickel Silver** Bottom Pins - sizes 0-9
- Cap Retainer Pin SCHCAPV1 (S1) (P1)



.115 Dia.

SCHLAGE T-Pin (V1) (S1) (P1)

- For use in all Schlage "F" Series Compressible Cylinders
- Made from Full Hard Brass Alloy 360
- Schlage - MFG# F506 - 451 506451V1, 506451S1, 506451P1



.115 Dia.

LAB Brand Pins For:
KWIKSET CYLINDERS (V1) (S1) (P1)

- **COLOR-CODED** to Industry Specifications
- 7 Brass Master Pins - sizes: .023, .031, .046, .069, .092, .115, .138
- 2 Brass Standard Driver Pins - sizes: .160, .180
- 2 Brass Anti-Pick Driver Pins - sizes: .160, .180
- 7 Brass Bottom Pins - sizes: .172, .195, .218, .241, .264, .287 .310



.108 Dia.

LAB Brand Pins For:
DORMA Full-Size SKC CYLINDERS (P1)

- 4 **Nickel Silver** Top Pins - sizes (See Order Form)
- 10 **Nickel Silver** Bottom Pins sizes 0-9



.115 Dia.

LAB Brand Pins For:
WEISER CYLINDERS (V1) (S1) (P1)

- **COLOR-CODED**
- 8 Brass Master Pins - sizes: 2-9
- 1 Brass Driver Pin - size: .186
- 10 Brass Bottom Pins - sizes: 0-9
- Cap Retainer Pin W425R0 (Vial Only)



.115 Dia.

LAB Brand Pins For:
CORBIN/RUSSWIN CYLINDERS (V1)

- 101 Brass Master/Top Pins - Sizes: M028 - M320
- 74 **Nickel Silver** Bottom Pins - Sizes: L160 - L354



.0935 Dia.

LAB Brand Pins For:
MASTER PADLOCK CYLINDERS (200 Pins per Pack) (P1)

- 7 Brass Master Pins - sizes: 1-7
- 2 Brass Top Pins - sizes: .120 & .136
- 8 Brass Bottom Pins - sizes: 0-7



.115 Dia.

LAB Brand Pins For:
ARROW CYLINDERS (V1)

- 8 Brass Master Pins - sizes: 2-9
- 1 Brass Driver Pin - size: .155
- 10 Brass Bottom Pins - sizes: 0-9



.115 Dia.

LAB Brand Pins For:
YALE CYLINDERS (P1)

- 7 Brass Master Pins - sizes: 2-8
- 3 Brass Driver Pins - sizes: .152, .190, .230
- 10 Brass Bottom Pins - sizes: 0-9



.095 Dia.

LAB Brand Pins For:
CCL & NATIONAL CYLINDERS (V1)

- | | |
|----------------------------|-----------------------------|
| Brass Master Pins | Brass Bottom Pins |
| • 8 NATIONAL sizes: 2-9 | • 10 NATIONAL sizes: 0-9 |
| • 8 CCL sizes: X025 - X113 | • 17 CCL sizes: W111 - W223 |
| Brass Top Pins | |
| • 4 NATIONAL sizes: 1-4 | |
| • 2 CCL sizes: X115 - X171 | |



.115 Dia.

LAB Brand Pins For:
SARGENT CYLINDERS (P1)

- 8 Brass Master Pins - sizes: 2-9
- 5 Brass Driver Pins - sizes: 10-14
- 10 Brass Bottom Pins - sizes: 1-10



.115 Dia.

SARGENT HOLLOW DRIVER (P1)

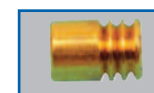
- 8 Brass Hollow Drivers - sizes: 4-11



Spool Pins
.108 & .115 Dia.

LAB Brand **SPOOL PINS** For: (P1)
BEST INTERCHANGEABLE CORES (.108 dia.)
.075 .084 .100 .125 .126 .168

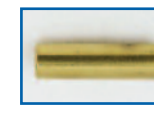
STANDARD CYLINDERS (.115 dia.) (V1) (S1)
.155 .160 .165 .170 .172
.180 .187 .190 .200 .207
.220 .235 .240 .273 .320



.115 Dia.

SERRATED HIGH SECURITY (V1)

- .155 .165 .170 .172 .187 .190 .200 .207
- .220 .235 .240 .273 .320



.077 Dia.

ACE (V1)

- Original Design and Sizes
- Brass
- 7 Brass Master Pins - size: 1-7
- 3 Brass Bottom Pins - size: 9-11
- AC8 Springs SPGACEV1 9-11



LAB

SUPPLYING THE GLOBAL SECURITY COMMUNITY SINCE 1956

Universal Pinning Kits

Only LAB kits contain the most up-to-date, comprehensive pinning charts with technical data straight from the manufacturers. LAB's exclusive "eye saver" exploded view of information helps make pinning easy and accurate.

Woody Classic

LWK003

104 sizes

Top/Master Pin sizes: .024 - .170

Bottom Sizes: .165 - .360

Springs 115L/115S

72 Pins per pocket

LWK005

92 sizes

Top/Master Pin sizes: .010 - .250

Bottom Sizes: .150 - .360

Springs 115L/115S

72 Pins per pocket

Features

Beautifully handcrafted in maple by New England wood craftsmen. Protected in clear polyfinish to preserve its outstanding qualities.

- **New** larger printing under pin pockets
- **New** larger "finger pin pockets"
- Color Passport Pin Chart
- Triple-latch protection
- Slide-out center drawer with Master Pins, Springs and Tool compartment.



15 3/4" x 8 1/4" x 3"



5 1/2"
6 1/2"

SMART WEDGE



Exclusive Features

- Developed by locksmiths with confined workspace in mind.
- Color Passport Pinning Chart with up-to-date factory pinning data
- Slide-out tool drawer
- 3 deep spring pockets
 - .115 Long - **NEW** Tangle Resistant Springs
 - .115 Short - Tangle Resistant Springs
 - T-Pin Spring for Schlage® "F" Series Cylinders
- Double-sized pin pockets (holds up to 200 pins per size)
- Large tool pocket on top of tray
- Injected Molded High-Impact Tray with pin sizes printed 100% larger
- Contains 3 sizes of spool pins and the "F" Series T-Pin for Schlage® Cylinders
- 72 Pins per pocket • 100 Springs per pocket

Drawer Size: 6 1/2" Long
5 1/2" Wide
1- 1/8" Drawer side-angled

Size: 13 1/4" X 10 1/2" F X 3 1/4" B

LSW003

Pin Sizes:

- .003 Increments
- 92 Sizes
- Top Pins: .024 - .200, .235
- Spool Pins: .160, .165, .180
- T-Pin: .170
- Bottom Pins: .159-.354*

LSW005

Pin Sizes:

- .005 Increments
- 86 Sizes
- Top Pins: .010-.200, .230, .235
- Spool Pins: .160, .165, .180
- T-Pin: .170
- Bottom Pins: .155-.360

* Contains the most commonly used sizes - No Dead Stock

FOR MORE DETAILS SEE WEBSITE www.labpins.com

Universal Pinning Kits

The LAB CLASSIC PRO, WEDGE PRO, SUPER WEDGE & SMART WEDGE PINNING KITS...
feature exclusive designs that can only be found on LAB PINNING KITS - U.S. PATENT number: 5,482,159.



21 5/8" x 7 7/8" x 1 5/8"

CLASSIC PRO SOLID METAL CONSTRUCTION

LPK003

- .003 Increments
- 124 Sizes
- Top Pins: .010 - .200
- Bottom Pins: .156 - .360
- Springs: 115L

LPK005

- .005 Increments
- 102 Sizes
- Top Pins: .010 - .300
- Bottom Pins: .150 - .360
- Springs: 115L
- 72 Pins per pocket
- 100 Springs per pocket

WEDGE PRO

EPK003

- .003 Increments
- 124 Sizes
- Tops: .010 - .200
- Bottoms: .156 - .360
- Springs: 115L

EPK005

- .005 Increments
- 102 Sizes
- Tops: .010 - .300
- Bottoms: .150 - .360
- Springs: 115L
- 72 Pins per pocket
- 100 Springs per pocket



21 5/8" x 7 7/8" x 2" F x 3" B

PRO PLATFORM WITH DRAWER EPD000

Retrofit your LAB Wedge Kit or LAB Classic Pro Kits onto the LAB Kit Platform (with drawer). It gives you the needed space for all your tools right at your fingertips. (Pin Block not included)



Size: 21 1/8" x 7 3/4" x 3 1/8"

SUPER WEDGE with Drawer

EPD003

- .003 Increments
- 124 sizes
- Tops: .010 - .200
- Bottoms: .156 - .360
- 50 Pins per pocket
- 100 Springs per pocket

EPD005

- .005 Increments
- 102 sizes
- Tops: .010 - .300
- Bottoms: .150 - .360
- 50 Pins per pocket
- 100 Springs per pocket



21 5/8" x 8 1/2" x 4 1/2" F x 5 3/4" B

Features...

All LAB Universal Kits feature one-piece steel construction with Seal-Tight cover, combined with traditional ultra-thin design. ALSO...

EXCLUSIVE Dual-View® Pin Tray

Pin sizes are enlarged and printed under the clear PETG tray, both above and inside the pin pockets for easy viewing at all angles.



EXCLUSIVE

Color Passport Pin Chart®

Pin sizes printed on the chart are the same color as the actual pins.

Features...

The LAB WEDGE PRO and SUPER WEDGE Pin Kits are designed with a 10° angle. This allows the user to easily view the contents without leaning over the kit to select pin sizes.



These WEDGE designed Kits are most commonly referred to by Security Professionals as the "ULTIMATE" Pin Kits.

Universal Pinning Kits

Features... DUR-X SEMI PRO and DUR-X PRO are both light weight and made of super tough polyethylene. Both kits have triple-latch, double-snap protection with center lid carrying handle. Key slots under both kits make mounting in a van or on a work bench simple. Both feature full pin size ranges, Seal-Tight cover, Dual-View® Pin Tray and LAB's exclusive Color Passport Pin Chart®.



22½" x 8¾" x 2¼"



22½" x 8¾" x 3"

DUR-X SEMI PRO

LDKU3

- .003 Increments
- 124 Sizes
- Top Pins: .010 - .200
- Bottom Pins: .156 - .360
- Springs: 115L
- 50 Pins per pocket

LDKZ5

- .005 Increments
- 102 Sizes
- Top Pins: .010 - .300
- Bottom Pins: .150 - .360
- Springs: 115L
- 100 Springs per pocket

DUR-X PRO with Drawer

LDK003

- .003 Increments
- 124 Sizes
- Top Pins: .010 - .200
- Bottom Pins: .156 - .360
- Springs: 115L
- 72 Pins per pocket

LDK005

- .005 Increments
- 102 Sizes
- Top Pins: .010 - .300
- Bottom Pins: .150 - .360
- Springs: 115L
- 100 Springs per pocket

STEEL MINI KITS

Measures just 8" x 6" x 11/16"
Small enough to fit into your tool box



LMK003

- .003 Increments
- 81 Sizes
- Masters: .024 - .090
- Drivers: .093 - .235
- Bottoms: .156 - .354
- Cylinder Springs: 115L
- Pins per pocket (size dependent)
 - Tops: 18-80 per pocket
 - Bottoms: 18-35 per pocket

LMK005

- .005 Increments
- 81 Sizes
- Masters: .010 - .090
- Drivers: .095 - .200
- Bottoms: .155 - .360
- Cylinder Springs: 115L
- Pins per pocket (size dependent)
 - Tops: 20-150 per pocket
 - Bottoms: 10-30 per pocket

Features...

- Steel construction finished in LAB's Hard-Coat metallic paint. Mini kits come with Color Passport Pin Chart®.
- NO UNNECESSARY SIZES



Metal Pinning Kits

For Original Lock Manufacturer's Cylinders

All LAB Brand Original Lock Manufacturer's Metal Pinning Kits contain **Genuine Original Pins** in the specific sizes required to service the Original Manufacturer's Cylinders.

LAB Brand CORBIN RUSSWIN KITS LRCK6

- 67 Brass Top Pin sizes
- 51 Nickel Silver Bottom Pin sizes
- Spool Pins (standard) J172 & J320
- Superior LAB construction with Seal-Tight Cover
- Dual-View® Pin Tray (pin sizes printed under clear tray)
- Heavy-duty steel box with ultra-thin features
- Pins per pocket - 50



21 1/8" x 7 7/8" x 1 5/8"

For all Corbin Russwin keyways and all depth systems. Accommodates conventional, master ring and ICore cylinders



11 1/8" x 8 1/4" x 2" F x 3 1/4" B

LAB Brand SCHLAGE SPK115

- 10 Nickel Silver Bottom Pins
- 8 Brass Master Pins
- 3 Brass Top Pins
- Cylinder Cap Pins & Springs
- Cylinder Springs
- SCHLAGE "F" Series T-Pins and Springs
- SCHLAGE Plug Follower
- Pinning/Bitting Chart
- Pins per pocket - 100



LAB Brand KWIKSET KPK115

- 6 Brass Bottom Pins
- 2 Brass Top Pins
- 6 Brass Master Pins
- Cylinder Springs
- COLOR-CODED to Industry Specifications
- Contains .160 & .180 Kwikset Anti-Pick Pins
- Includes cylinder removal tool (pickle fork)
- Plug follower
- New Pinning/Bitting COLOR-CODED Information Chart
- Pins per pocket - 100



11 1/8" x 8 1/4" x 2" F x 3 1/4" B

LAB Brand Kit for: CORBIN/RUSSWIN SYSTEM 70 DH & Z LIKCR

- Contains Original Nickel Silver Bottom Pins Brass Tops and Masters
- .028 pin depths
- .509 & .552 Diameter plugs
- Repinning system 70 DH & Z including ICore
- Pins per pocket - 100



11 1/8" x 8 1/4" x 2" F x 3 1/4" B

LAB BRAND Interchangeable Core Kits

LAB Brand COLOR-CODED ICORE KIT (A2 SYSTEM) BFK108

- 10 Brass COLOR-CODED Bottom Pins, Sizes 0-9
- 18 Brass Master/Top Pins sizes 2-19
- Caps and both 6 & 7 Pin Spring Covers
- 2 different length Springs 108B - Long 108F - Short
- 2 style caps (stamped and machined)
- 3 in 1 (A2, A3, A4) Key Gauge
- Caps and both 6 & 7 Pin Spring Covers
- Deep Tool Pocket for LAB ANNEX®
- COLOR-CODED Chart
- Also Available: A3, A4, Combo Kit A3BFK (Not in a wedge shape)
- Pins per pocket - 100



For BEST IC See Page 17



11 1/8" x 8 1/4" x 2" F x 3 1/4" B

LAB Brand ORIGINAL ICORE (A-2 SYSTEM) For: Falcon, Schlage small format, Medeco Keymark, etc. NSK108

- 10 Nickel Silver Bottom Pin sizes 0-9
- 18 Brass Master/Top Pins sizes 2-19
- Caps and both 6 & 7 Pin Spring Covers
- 2 different length Springs 108B - Long 108F - Short
- Deep Tool Pocket for LAB ANNEX®
- Pins per pocket - 100



11 1/8" x 8 1/4" x 1 3/4"

LAB Brand SCHLAGE & KWIKSET

LSK2N1

SCHLAGE SIZES

- 10 Nickel Silver Bottom Pins
- 8 Brass Master Pins
- 3 Brass Top Pins
- Cylinder Springs

KWIKSET SIZES

- 6 Brass Bottom Pins
- 2 Brass Top Pins
- 6 Brass Master Pins
- Cylinder Springs
- COLOR-CODED to Industry Specifications

• Pins per pocket - 100



11 1/8" x 8 1/4" x 1 3/4"

LAB Brand WEISER WSR115

- 10 Brass Bottom Pins
- 8 Brass Master Pins
- 1 Top Pin
- Cylinder Springs
- Pins per pocket - 100



11 1/8" x 8 1/4" x 1 3/4"

LAB Brand SARGENT SGT115

- 10 Brass Bottom Pins
- 8 Master Pins
- 5 Driver Pins
- Cylinder Springs
- Pins per pocket - 100



11 1/8" x 8 1/4" x 1 3/4"



Wood Pinning Kits

For Original Lock
Manufacturer's Cylinders

Features... Beautifully Master-crafted quality construction in natural full-grain maple. Features large pockets for extra pins and easy pin selection. They make great benchmates for in-shop use.



LAB Brand A-2
**UNIVERSAL COLOR-CODED
INTERCHANGEABLE CORE PIN KIT
BWI108**

- **COLOR-CODED** Brass Pins
- 10 Brass Bottom Pins sizes 0-9
- 18 Brass Master/Top Pins sizes 2-19
- Stamped Caps
- 6 & 7 Pin Spring Covers
- 2 different length Springs:
108B - Long 108F - Short
- Pins per pocket - 100



LAB Brand A-2
INTERCHANGEABLE CORE PIN KITS

BWB108

For use in BEST
ICORES

- 10 **Nickel Silver**
Bottom Pins
- 18 Brass
Master/Top Pins
- BEST Stamped Caps
- 108B Long Springs
- Pins per pocket - 100

BWF108

For use in all ICORE Systems
(Except BEST)
ie; Schlage small format,
Falcon Medeco Keymark

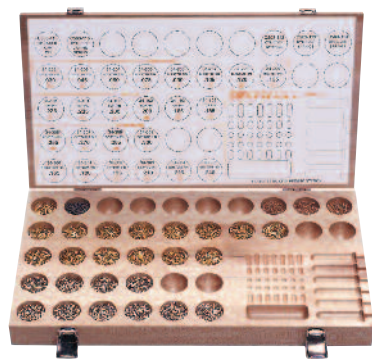
- 10 **Nickel Silver**
Bottom Pins
- 18 Brass Master/Top Pins
- 6 & 7 Pin Spring Covers
- 108F Short Springs
- Pins per pocket - 100



Features...

2 IN 1 PINNING KITS

Each kit contains 6-cylinder
Pinning Block with a "Mini Work
Area" for hands-on re-pinning.
Size for all Kits: 14½" x 8" x 2"



LAB Brand
**WOOD PIN KIT for
SCHLAGE CYLINDERS**

SWK115

- 10 **Nickel Silver** Bottom Pins
- 8 Brass Master Pins
- 3 Brass Top Pins
- Cylinder Cap Pins & Springs
- Cylinder Springs
- Pins per pocket - 100



LAB Brand
**2-N-1 PINNING KIT for
SCHLAGE & KWIKSET CYLINDERS**

LW21SK

- Original Manufacturer's Sizes
- **Nickel Silver** Bottom Pins (Schlage)
- Brass Bottom Pins (Kwikset)
- Brass Master Pins & Top Pins
- Cylinder Cap Pins & Springs
- Kwikset Pins are **COLOR-CODED** to Industry Specifications
- Pins per pocket - 100



LAB Brand
**2-N-1 PINNING KIT for NATIONAL &
CCL CABINET LOCK CYLINDERS**

LWK095

- All Original Manufacturer's Sizes
- **COLOR-CODED** Location Chart
- .095 Diameter Top/Master/Bottom Pins
- Pins per pocket - 50

FOR MORE DETAILS SEE WEBSITE www.labpins.com



Mini DUR-X Pinning Kits

For Original Lock Manufacturer's Cylinders

* All kits contain approximately 25 Pins per pocket

Features

MINI DUR-X PIN KITS

"A unique and revolutionary departure from the plastic breakable pinning kits."

These very handy Mini- DUR-X Pinning Kits contain only LAB BRAND PINS for original lock manufacturer's cylinders. Made of Super-Tough polyethylene, each kit features a platform insert with a reusable protective cover to protect contents. Contains location chart and only those size pins and springs required to re-pin specific lock companies' cylinders.

LAB Mini DUR-X Kit For: **SCHLAGE CYLINDERS**

- LMDSCH**
- 8 Master Pins (Brass)
 - 4 Driver Pins (Brass)
 - 10 Bottom Pins (Nickel Silver)
 - Cylinder Cap Pins and Springs
 - Cylinder Springs

LAB Mini DUR-X Kit For: **ACE CYLINDERS (Tubular)**

- LMDACE**
- 7 Top Pins
 - 3 Bottom Pins
 - Cylinder Springs

LAB Mini DUR-X Kit For: **WEISER CYLINDERS**

- LMDWSR**
- 8 Master Pins
 - 1 Driver Pin
 - 10 Bottom Pins
 - Cylinder Springs

LAB Mini DUR-X Kit For: **.019 YALE CYLINDERS**

- LMDYLE**
- 7 Master Pins
 - 3 Driver Pins
 - 10 Bottom Pins
 - Cylinder Springs

LAB Mini DUR-X Kit For: **KWIKSET CYLINDERS**

- LMDKWK**
- 6 Master Pins
 - 2 Standard Driver Pins
 - 2 Anti-Pick Driver Pins
 - 6 Bottom Pins
 - Cylinder Springs
 - **COLOR-CODED** to Industry Standards

LAB Mini DUR-X Kit For: **ARROW CYLINDERS**

- LMDARW**
- 8 Master Pins
 - 1 Driver
 - 10 Bottom Pins

LAB Mini DUR-X Kit For: **MASTER PADLOCK CYLINDERS**

- LMDMAS**
- 7 Master Pins
 - 2 Top Driver Pins
 - 8 Bottom Pins
 - Cylinder Springs

LAB Mini DUR-X Kit For: **SARGENT CYLINDERS**

- LMDSGT**
- 8 Master Pins
 - 5 Driver Pins
 - 10 Bottom Pins
 - Cylinder Springs

LAB Mini DUR-X Kit For: **WESLOCK CYLINDERS**

- LMDWES**
- 8 Master Pins
 - 2 Top Pins
 - 11 Bottom Pins
 - Cylinder Springs

LAB Mini DUR-X **3•N•1 UNIVERSAL Kit**

LMD3N1

This unique 3•N•1 Universal kit contains all the **COLOR-CODED** Universal pins required to re-pin Kwikset, Schlage and Weiser.

- 3 Top Pins
- 23 Bottom Pins
- Cylinder Springs

LAB Mini DUR-X Kit For: **A2 INTERCHANGEABLE CORE CYLINDERS**

- LMDICC**
- **COLOR-CODED** Brass Pins
 - 15 Top/Master Pins
 - 10 Bottom Pins
 - Long & Short Cylinder Springs
 - Caps

LAB Mini DUR-X Kit For: **A2 INTERCHANGEABLE CORE CYLINDERS**

- LMDOIC (Falcon, Schlage Small format, Medeco, Keymark etc.)**
- 15 Top/Master Pins
 - 10 Nickel Silver Bottom Pins
 - Long & Short Springs
 - Caps



8" x 5 1/8" x 1 3/4"

LAB Mini DUR-X Kit For: **A2 INTERCHANGEABLE CORE BEST CYLINDERS**

- LMDBIC (BEST ONLY)**
- 15 Top/Master Pins
 - 10 Nickel Silver Bottom Pins
 - BEST Springs Long
 - BEST Caps

LAB Mini DUR-X Kit For: **BALDWIN CYLINDERS**

- LMDBAL**
- 8 Master Pins (Brass)
 - 3 Top Pins (Brass)
 - 10 Bottom Pins (Nickel Silver)
 - Cylinder Springs

LAB Mini DUR-X Kit: **SECURITY PLUS**

- LMDSEC**
- 13 Brass Spool Pins
 - Brass Serrated Pins
 - Adds pick resistance to most standard Lock Cylinders using .115 Dia. pins

LAB Mini DUR-X Kit For: **DEXTER CYLINDERS**

- LMDDXT**
- 8 Master Pins
 - 1 Top Pin
 - 10 Bottom Pins
 - Cylinder Springs

LAB Mini DUR-X Kit For: **LOCKWOOD CYLINDERS**

- LMDLWD**
- 12 Brass Top Pins
 - 11 Brass Bottom Pins
 - Cylinder Springs

LAB Mini DUR-X Kit For: **CORBIN RUSSWIN LARGE FORMAT ICORE KIT**

- LMDCR**
- 20 Brass Master/Top/Build-Up Pins
 - 6 Top Pins
 - Build Up Pins +1 to -4
 - 5 Master Pins
 - 6 Nickel Silver Bottom Pins
 - Corbin Russwin ICore Cylinder Springs (172F217)



Custom Pinning Products

REPINNING KIT

LREPIN

The LAB Repinning Kit was designed with the repinner in mind. Its unique insert has pocket depths unlike a normal pinning kit. The locksmith can customize their own repinning kit to accommodate their specific needs (ie. pins, clips, springs, cores, tools.)

- Smart Wedge Design
- Uniquely designed insert
- Sold empty
- Side drawer for tools
- Can accommodate approximately 2000 of the largest Schlage pin in the big pockets and upwards of 5000 of the smallest pin.
- Leakproof Seal-Tight Cover
- Wedge Shape with 10° angle

STARTER KIT

The LAB Starter Kit is made of the same durable polyethylene material as the LAB DUR-X. The kit covers the needs of locksmith schools, training classes or seminars and those starting out in the industry. Tools are stored in a deep pocket under the Pinning Block.

KIT Includes:

- Polyethylene Case
- 11 Kit variations
- Molded Pinning Block
- Formed End Tweezers
- Key Gauge (Not in Sargent LSKSGT or Arrow LSKARW)
- Plug Follower (Not in ICore Kits)
- Kwikset Cylinder Removal Tool (LSKKWK Only)

***NOTE: Plug follower not required in:**

LSKICC, LSKOIC and LSKBIC

****NOTE: Key Gauge not in LSKSGT or LSKARW**

11 Kit Variations:

Available in the following configurations;

- LSK003 - .003 Mini Metal Universal
- LSK005 - .005 Mini Metal Universal
- LSKSCH - SCHLAGE Mini DUR-X
- LSKSGT - SARGENT Mini DUR-X **
- LSKKWK - KWIKSET Mini DUR-X
- LSKWSR - WEISER Mini DUR-X
- LSKICC - A2 Brass ICore Mini DUR-X*
- LSKOIC - A2 Nickel Silver ICore Mini DUR-X*
- LSKBIC - BEST A2 ICore Mini DUR-X*
- LSK3N1 - 3N1 KWIKSET/SCHLAGE/WEISER Mini DUR-X
- LSKARW - ARROW Mini DUR-X**

Drawer Size:
6½" Long
5½" Wide
1- 1⅞" Drawer
side-angled



13¼" x 10½" x 2"F x 3¼"B



Large tool storage pocket
below Pinning Block

15" x 10¾" x 3¾"

Spring Kit

LSPGKIT

Loaded with every Spring LAB manufactures along with Shims, Covers and Caps plus Spool and T-Pins. There are ten pockets left empty allowing more custom filling by the locksmith. The Smart Wedge design includes a side drawer for tools.

Kit includes:

- Springs:** (125* to 250 springs**)
 - Corbin Stainless ICore Springs: 111IC*
 - Corbin Stainless Standard Springs: 111SD*
 - Master/Yale Springs: SP95*
 - Kwikset Stainless Springs: KWKSPG*
 - ACE Springs: SPGACE*
 - Schlage F Series T-Pin Springs: SPGSCH*
 - Schlage Cylinder Cap Springs: SP74*
 - Universal .115 Long Tangle Resistant Springs: 115LT**
 - Universal .115 Long Standard Springs: 115L**
 - Universal .115 Short Standard Springs: 115S**
 - Falcon ICore Short Springs: 108F**
 - Best ICore Long Springs: 108B**

* 125 Springs, **250 springs

Pins:

- 100 Kwikset .160 Spool Pins: LKJ160
- 100 Kwikset .180 Spool Pins: LKJ180
- 100 Schlage T-Pins: FS506-451
- Interchangeable Core Caps:
- 250 ICore Stamped: I027
- 250 ICore Machined: I027M

Shims / Covers:

- 100 Curved Shims: LSM0
- 50 Pin Covers: FSC6 (6 Pin)
- 50 Pin Covers: FSC7 (7 Pin)

Tools:

- Universal Plug Follower: LFT001
- Kwikset/Schlage Key Gauge: LKGKS

Drawer Size:
6½" Long
5½" Wide
1- 1⅞" Drawer
side-angled



13¼" x 10½" x 2"F x 3¼"B

Large tool storage pocket below Pinning Block

Picking Instruments designed by G.L. Finch



LPT013 17 Piece Tri-Fold Set
4½" x 6"



LPT015
10 Piece Set
2¼" x 5"

Pick Set Contents

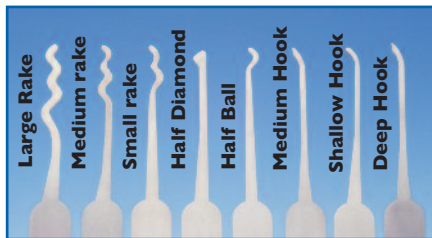
LPT015
LPT013

LPT001 Shallow Hook – Deep Hook		•
LPT002 Half Ball – Shallow Hook		• •
LPT003 Half Diamond – Deep Hook		• •
LPT004 Large Rake – Shallow Hook		• •
LPT005 Medium Rake – Medium Hook		• •
LPT006 Small Rake – Deep Hook		• •
LPT007 Small Rake – Half Diamond		• •
LTTM01 Medium Turning Tool (.075) Full Twist ONE END		• •
LTTM02 Medium Turning Tool (.093) Full Twist ONE END		• •
LTTM03 Medium Turning Tool (.125) Full Twist ONE END		• •
LTT005 Auto Disc Turning Tool		• •
Removable Handles	1	6

Features

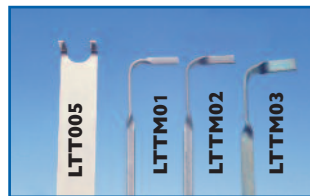
- Durable Nylon Case
- Velcro Closures
- Stainless Steel Picks
- Unique Designs
- Half and Full Twist designed Turning Tools

PICKING INSTRUMENTS



- LPT001** Shallow Hook - Deep Hook
- LPT002** Half Ball - Shallow Hook
- LPT003** Half Diamond - Deep Hook
- LPT004** Large Rake - Shallow Hook
- LPT005** Medium Rake - Medium Hook
- LPT006** Small Rake - Deep Hook
- LPT007** Small Rake - Half Diamond

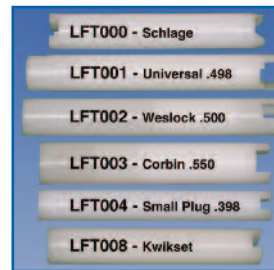
TURNING TOOLS



- LTT005** Auto Disc Tool
- LTTM01** .078 Tip - Medium Flex
- LTTM02** .093 Tip - Medium Flex
- LTTM03** .125 Tip - Medium Flex

All LAB Turning Tools are double-ended with standard and half-twist Tips on each end

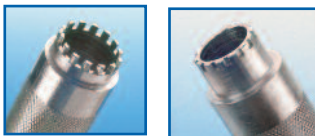
FOLLOWERS



- Light weight
- Very durable
- White Delrin®
- Reflects light
- Followers are not labeled

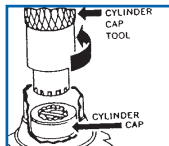
- LFT000** Schlage (.500) Dia.
(For 3 types of cylinders)
 - LFT001** Universal (.498) Dia.
 - LFT002** Weslock (.500) Dia.
 - LFT003** Corbin (.550) Dia.
 - LFT004** Small Plug (.398) Dia.
 - LFT008** Kwikset (.500) Dia.
- FOLLOWER SET ALSO AVAILABLE**
- LFT005** - 5 Piece Set of All the above Followers (except Kwikset)

CYLINDER CAP REMOVAL TOOL



LCR005

At last there is a time saving tool to remove the cylinder caps from Schlage, Weiser, Arrow and Falcon cylinders. This tool has been modified to accommodate the extended tail-piece for Schlage cylinders.



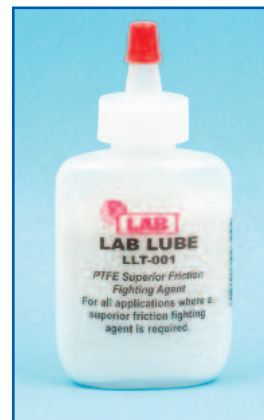
FORMED END TWEEZERS



LZT001

- Curved Ends for Positive Grip
- Perfect size & weight
- Made of Stainless Steel

Pin Tip



LAB LUBE

1.0 oz.

LLT001

Made of Polytetrafluoroethylene. A micronized* powder lock lubricant that will not "cake-up" as graphite does.

A superior friction-fighting agent. Used by most major lock manufacturers

*Material safety data sheet available at labpins.com

INTERCHANGEABLE CORE ANNEX[®]

LICCB

The LAB Interchangeable Core Annex[®] offers the simplest method for the loading of Interchangeable Core pins, springs and caps, using only one instrument for both functions. A second time saving feature is a Slideout Code Book below the area where the core is slid in place. This allows the user to unload the core pins, springs and caps into a confined area without spilling parts in or around the work area. This Slideout Code Book is also used to decode the core to determine the bitting of the control key when it is not available and also determine the top master key bitting.

MADE OF DURABLE STAINLESS STEEL

UNITED STATES PATENT 6,021,655

LCI001 CAPPING INSTRUMENT

LPE001 PIN STACK EVICTOR

Tools are available separately.

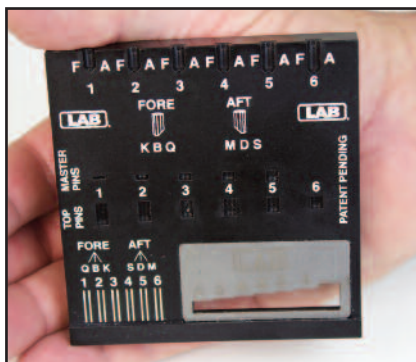


#1 Selling Capping Instrument

(Both tools above are exclusively designed for use with the LAB I.C. ANNEX[®] only)

LAB Pin Decoder

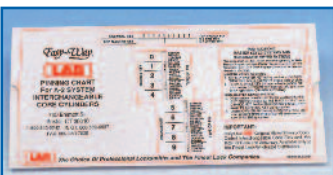
Decodes Medeco[®] Biaxial[®] Bottom Pins and MORE.



LPDMED

- Determine length, angle, skew for Medeco Biaxial Bottom Pins
- Measure/Identify master and driver pin lengths
- Determine key cut depths
- Identify fore and aft key cut positions

LAB EASY WAY PINNING CHART



LSC001

- A2 Interchangeable Core Cylinders
- Use for all levels of master keying
- Exact pin usage
- Instructions included

KWIKSET CYLINDER REMOVAL TOOL

CRT001

- Used on Standard 400 Series cylinder assemblies
- Made from 0.080" thick cold rolled steel
- Yellow dichromate coated to resist corrosion



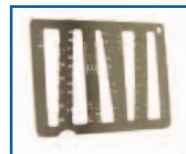
ICORE KEY GAUGE



LKGIC

- A2, A3, and A4 Systems
- .20 gauge thick 304 stainless steel
- Laser machined and engraved to maintain LAB's strict quality standards
- Measures 2.75" x 2.00"

5-N-1 GAUGE



LKG001

- For Kwikset, Schlage, Weiser, Weslock, Master Lock
- Accurate
- Measures 2.125" x 3.375"

2-N-1 GAUGE



LKGKS

- 2-N-1 Gauge for Kwikset, Schlage only
- Accurate
- Measures 1.375" x 2.125"

WOOD BLOCK PINNING TRAY



LPB001

- Made of maple
- Holds 5 plugs
- Great for repinning multiple cylinders, master and grand master pinning
- Measures 5 1/4" x 4 1/4"

LAB PIN/WORK MAT



LABMAT

- Approximate size 16" x 10" polyvinyl
- Pinning work mat retains hundreds of loose pins
- Molded in residential pin block area
- Great for vans or benches

PORTABLE PINNING TRAY



LPB002

- Tough Polyethylene construction
- Platform insert
- Secure lid allows for pre-staging
- Holds 4 plugs
- Size: 8" x 5 1/8" x 1 3/4"



LAB Pins, Kits & Tools for BEST A2, A3, A4 INTERCHANGEABLE CORES ONLY



BEST Pins & Caps

LAB Brand IC Pins For BEST

LAB BEST IC Pins for A2, A3, A4 systems for use with all BEST ICORES

- A-2 Master / Top Brass Pin sizes 2B-19B
Bottom Nickel Silver Pin sizes 0A-9A
- A-3 Master / Top Brass Pin sizes 1D-13D
Bottom Nickel Silver Pin sizes 0C-6C
- A-4 Master / Top Brass Pin sizes 1F-11F
Bottom Nickel Silver Pin sizes 0E-5E



BEST IC Springs

108SV1

"Stainless Steel"
Package Qty - 100

LAB Brand Kit For: BEST A2 IC LIKIC

- Top Pins: 2B-19B
Full Hard Brass
Pins per pocket - 100
- Bottom Pins: 0A - 9A
200 Nickel Silver pins per pocket

11 1/8" x 8 1/4" x 2" F x 3 1/4" B



LAB Brand A2 BWB108

Wood Design
For use with BEST ICORES

- 10 Nickel Silver Bottom Pins
- 18 Brass Master/Top Pins
- BEST Springs 108BSV1
- BEST Caps Stamped
- Pins per pocket 100

14 1/2" x 8" x 2"



LAB Mini DUR-X Kit For: BEST A2 INTERCHANGEABLE CORE

LMDBIC

- 15 Brass Top/Master Pins
- 10 Nickel Silver Bottom Pins
- BEST Springs 108SV1
- BEST Caps Stamped
- Approx. 25 Pins per pocket

7 1/2" x 4 1/2" x 1 1/2"

ICORE KEY GAUGE



LKGIC

- A2, A3, and A4 Systems
- .20 gauge thick 304 stainless steel
- Laser machined and engraved to maintain LAB's strict quality standards
- Measures 2.75" x 2.00"



INTERCHANGEABLE CORE

ANNEX

ANNEX
with Slideout Code Book
LICCB

- Includes:
- ANNEX with Slideout Code Book
 - Capping Instrument (LCI001)
 - Pin Stack Evictor (LPE001)

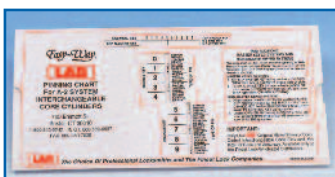
Approximate Size:

- Depth: 1 1/4"
- Width: 1 1/4"
- Height: 3"
- Weight: 0.80 lb.

CAPPING INSTRUMENT

PIN STACK EVICTOR

LAB EASY WAY PINNING CHART



LSC001

- A2 Interchangeable Core Cylinders
- Use for all levels of master keying
- Exact pin usage
- Instructions included

(Both tools above are exclusively designed for use with the LAB I.C. ANNEX® only)

INTERCHANGEABLE CORE ANNEX®

LICCB

The LAB Interchangeable Core Annex® offers the simplest method for the loading of Interchangeable Core pins, springs and caps, using only one instrument for both functions. [See More on page 16](#)



BEST tradenames and trademarks used in this Product Guide are owned by the manufacturer of such products

LAB Interchangeable Core .108 Dia. Bottom Pin Product Data Sheet

LAB BEST INTERCHANGEABLE CORE Bottom Pin Design:

- Available in sizes to meet A2, A3, A4 system requirements
- Note: Use Only Nickel Silver Bottom Pins with Nickel Silver Key Blanks.**

Nickel Silver Material:

- For use with all BEST INTERCHANGEABLE CORE only
- Increased flat nose design to give positive key function

Packaging:

- Available in Polybag only, (standard pack 100, economy pack 1000 or 5000)



LAB ORIGINAL INTERCHANGEABLE CORE Bottom Pin Design:

- Available in sizes to meet A2, A3, A4 system requirements
- Note: Use Only Nickel Silver Bottom Pins with Nickel Silver Key Blanks.**

Nickel Silver Material:

- For use with all IC using **Nickel Silver** keys (Except BEST).
Falcon, Schlage small format, Medeco Keymark, Arrow
- Radius to flat transition to decrease key/pin wear

Packaging:

- Available in Polybag only for (A3, A4), A2 is Vial (V1) or Polybag (P1), (standard pack 100, economy pack 1000 or 5000)



LAB UNIVERSAL INTERCHANGEABLE CORE Bottom Pin Design:

UNIVERSAL BRASS FOR A2, A3 & A4 INTERCHANGEABLE CORE CYLINDERS

Use Brass Key Blanks with Brass Pins Only

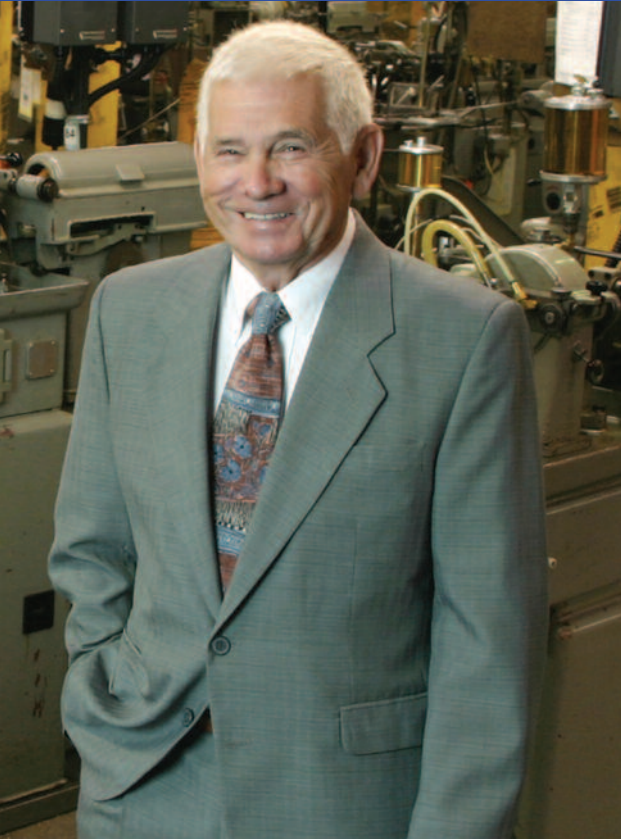
- A2/A4 are **COLOR-CODED**, A3 is **COLOR-CODED** Bottom Pins only
- .108 Dia. Pins

Packaging: (V1) (S1)

- Available 100 per pack

	A2	A3	A4
Tops:	2-19	1-13	1-11
Bottoms:	0-9	0-6	0-5





Born on American pride and craftsmanship, Mr. Robert A. Labbe started LAB in 1956. The purpose, to provide the finest quality lock tumbler pins and pin kits to the locksmith trade and lock manufacturers.

Mr. Labbe and his team have made LAB the single largest company in the World dedicated to the manufacturing of lock tumbler pins. Mr Labbe has done this through his hard work, innovative design and craftsmanship. He has also built a team of dedicated LAB employees, LAB Sales Representatives, and a network of the finest Security Hardware Distributors in the Industry today.

LAB provides precision lock tumbler pins, pin kits and LAB tools to over 30 of the largest lock manufactures worldwide.

In today's economy value and quality mean everything. At LAB we stand by the fact that we can produce an American made product of unrivaled quality and be able to pass it on at fair value.

Mr. Labbe's ability to design and refine standard machine operations gave birth to what is the foundation of LAB today. The dedication to quality and the commitment to provide fine American made products for the locksmith trade and lock manufacturers will take LAB into the next 50 years.



SUPPLYING THE GLOBAL SECURITY COMMUNITY SINCE 1956



1-800-243-8242

FAX 1-860-583-7838 www.labpins.com

Schlage, Medeco and Biaxial, Keymark, Kwikset, Weiser, Corbin, Russwin, Best, Falcon, Master, Arrow, Weslock, Yale, CCL, National, Sargent, Ace, Dexter, Delrin products of DuPont and other tradenames and trademarks used in this catalog are owned by the respective manufacturers of such products.

LAB Security Products is not responsible for typographical errors.

LAB products are sold only through qualified Security Wholesale Distributors. Please log on to our website or call for a distributor in your area.